

LOCATION SETUP DIAGRAM

CLAGUE CABIN

Voting Room: Community Room

55' x 31'

Notes:

- You **MUST** follow this diagram as closely possible when setting up your Polling Location.
- Any major changes to the setup of the Polling Location must be approved by the Board of Elections.
- Note any approved setup changes on this diagram and place in the Return Envelope to be turned in Election Night.

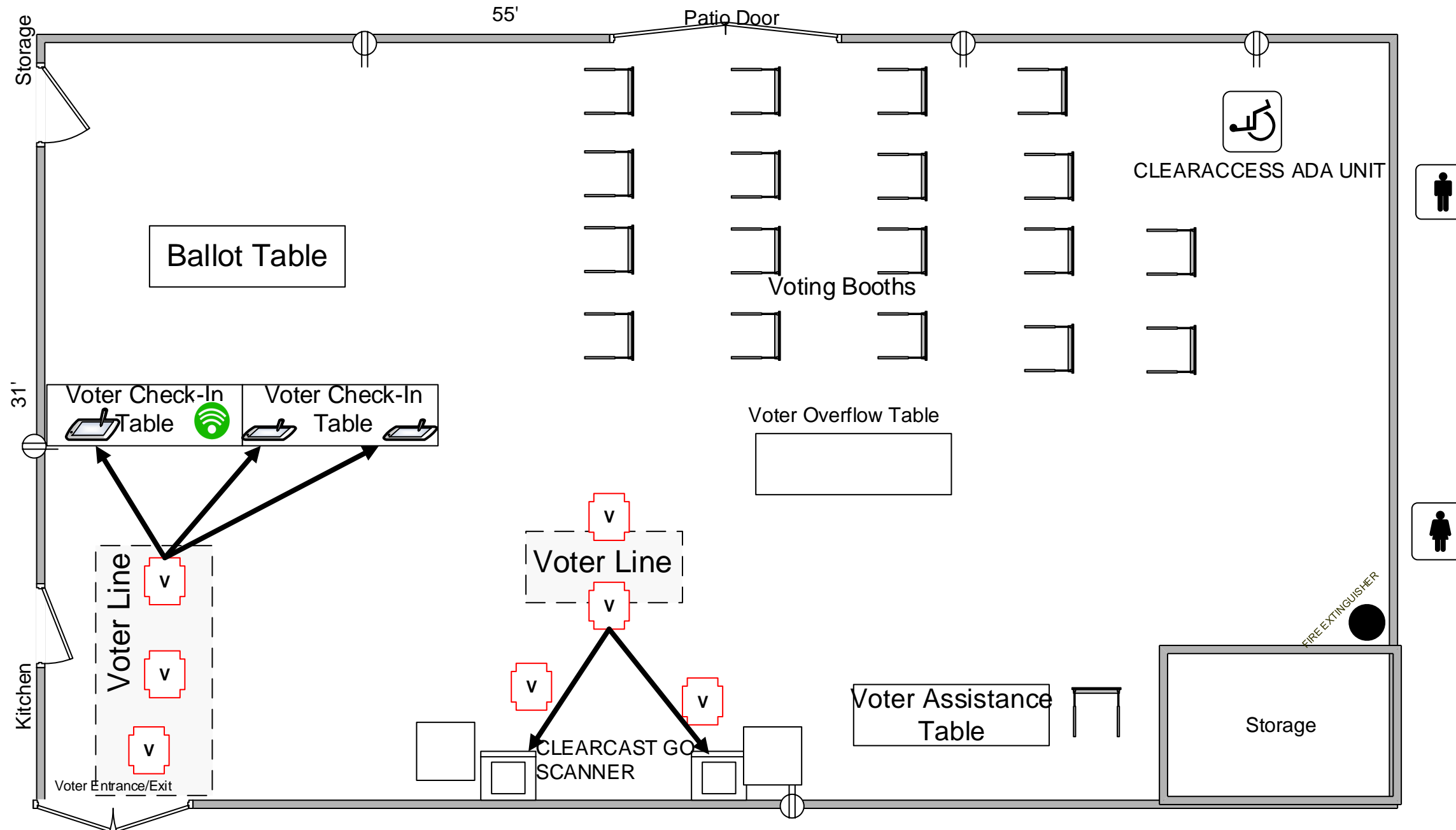
ROVER VERIFICATION:

Is the location set up according to this diagram?

___ YES ___ NO*

*If the location is not set up according to this diagram, please mark changes.

Rover Signature: _____



Key:

- VOTER
- VOTING BOOTH
- CLEARCAST GO SCANNER
- ELECTRONIC POLLBOOK
- MiFi HOTSPOT
- CLEARACCESS ADA UNIT
- ELECTRICAL OUTLET

3 Precincts Assigned:

- WESTLAKE 01-A
- WESTLAKE 01-B
- WESTLAKE 01-C

Staff and Equipment:

- 19 – Voting Booths
- 2 – Clearcast Go Scanner
- 3 – Electronic Pollbooks
- 1 – MiFi Hotspot
- 1 – ClearAccess ADA Unit