

# Post Election Profile November 6, 2018

Updated 11/28/2018

**975 Precincts**  
**345 Voting locations**  
**59 Municipalities**

**115 Candidates**  
 13 Federal  
 47 State (includes Supreme Court)  
 10 County  
 30 County Judicial  
 15 Municipal

**110 Issues**  
 1 State  
 3 County  
 99 Municipal  
 7 School

**903,046 Reg. voters**  
 232,174 Democrat  
 136,053 Republican  
 534,146 Nonpartisan  
 673 Minor Party

## Turnout 55%

492,324 Ballots cast  
 303,964 Election Day  
 11,810 Provisional  
 315,774 Election Day + Provisional (64%)  
 176,550 Vote by Mail (36%)  
**19,333 Early Voters** (included in vote by mail total)

## Vote by Mail

**199,399 Ballots Requested**  
 22% of registered voters requested ballots

## Ballot Requests by Party:

Dem.	Rep.	Nonpartisan	Minor party
86,673	44,327	68,163	236

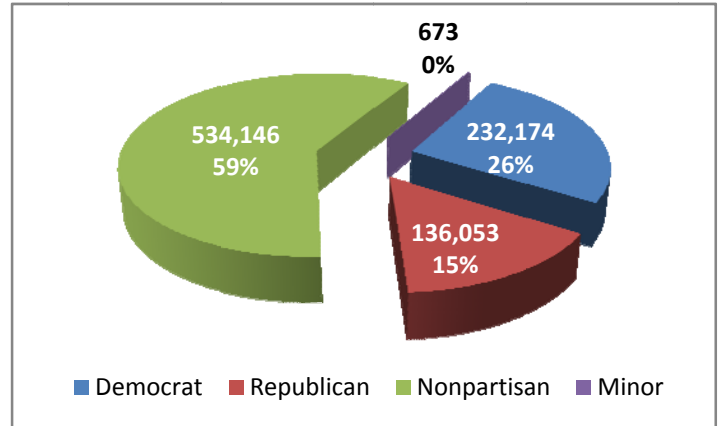
## 178,801 Ballots Returned

90% of requested ballots that have been returned  
 (Includes challenged ballots)

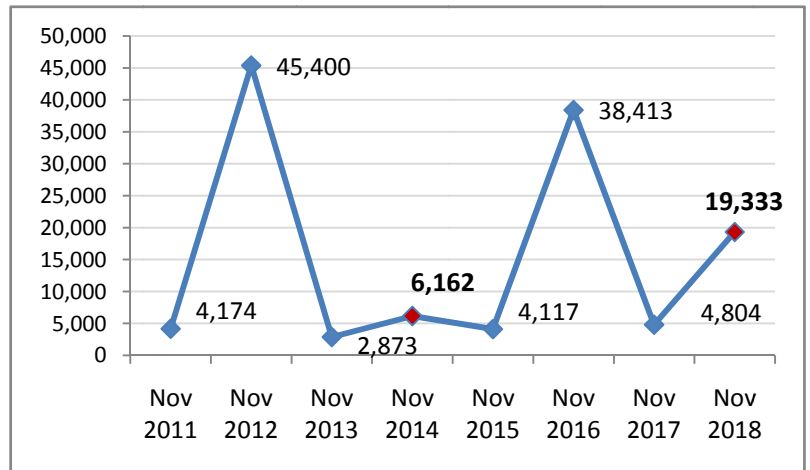
## Ballot Returns by Party:

Dem.	Rep.	Nonpartisan	Minor party
82,138	42,156	54,290	217

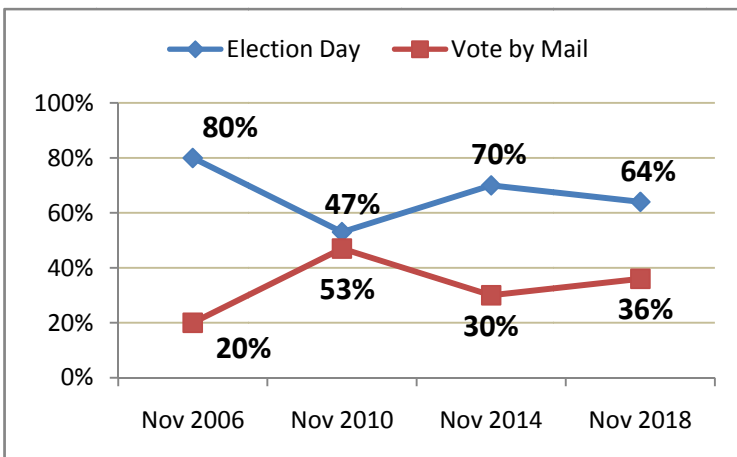
**19,333: Early, in-house voters**



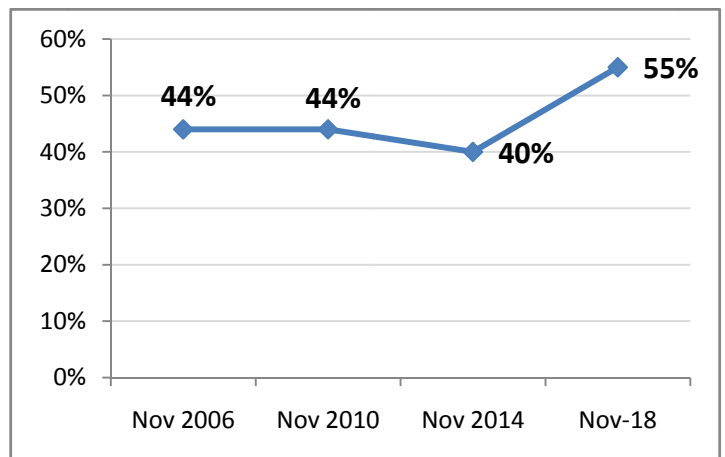
## Early Voting Trends in Midterm Elections



## Election Day and Vote by Mail in Midterm Elections



## Voter Turnout History in Midterm Elections



**2006 November General**  
**1,054,670** Registered Voters  
**468,164** Total ballots cast

**374,957** Election Day  
**93,207** Vote by Mail  
 Cast early (Unavailable)  
**11,747** Cast Provisional (included in Election Day total)

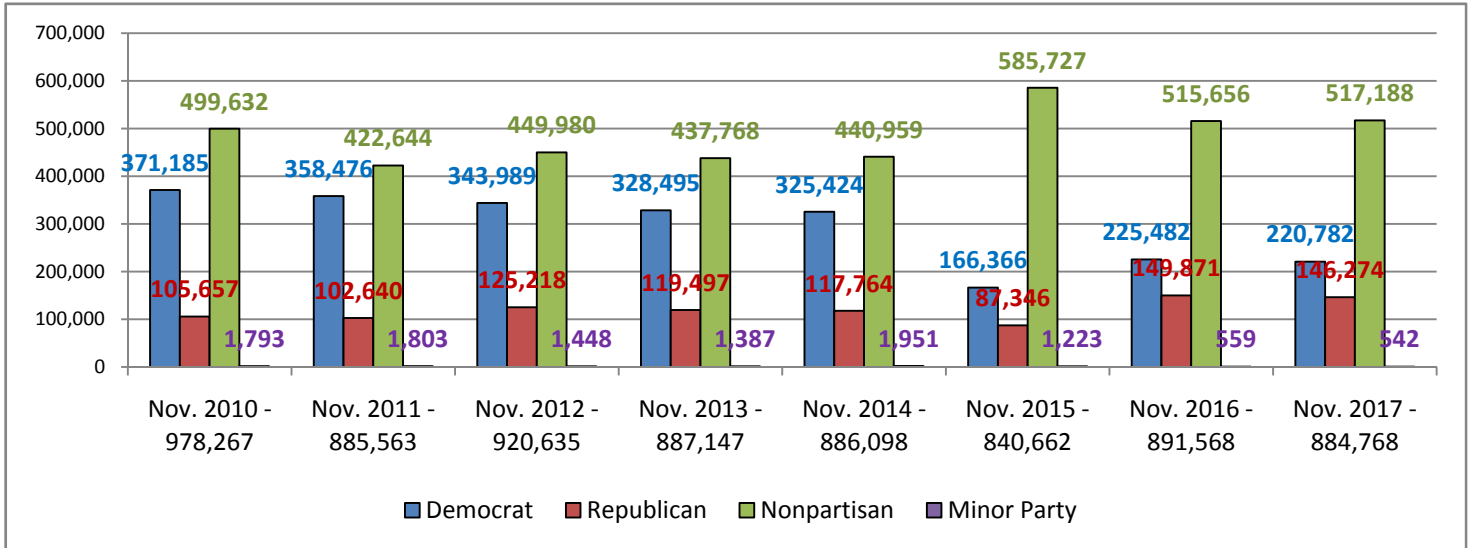
**2010 November General**  
**978,267** Registered Voters  
**432,052** Total ballots cast

**230,169** Election Day  
**201,883** Vote by Mail  
**5,050** Cast early (included in cast by mail)  
**15,071** Cast Provisional (included in Election Day total)

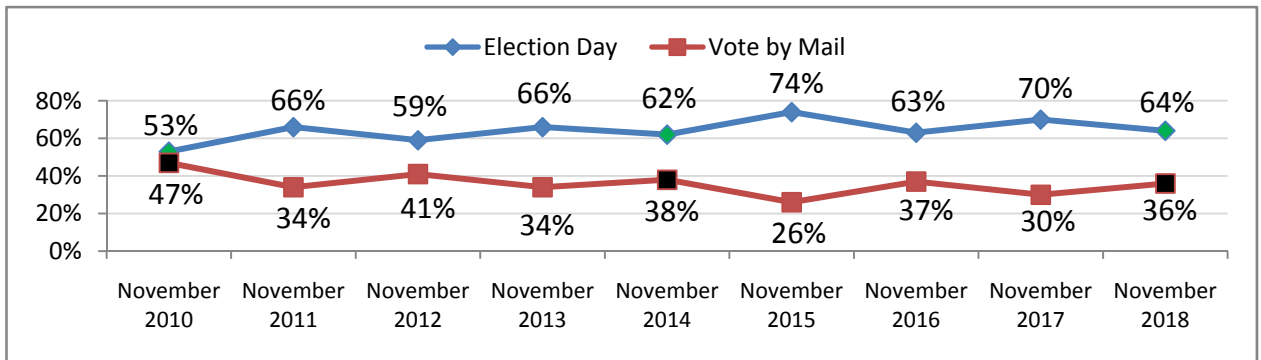
**2014 November General**  
**886,098** Registered Voters  
**350,534** Total ballots cast

**210,423** Election Day  
**133,331** Vote by mail  
**6,162** Cast early (included in cast by mail)  
**6,780** Cast Provisional (included in Election Day total)

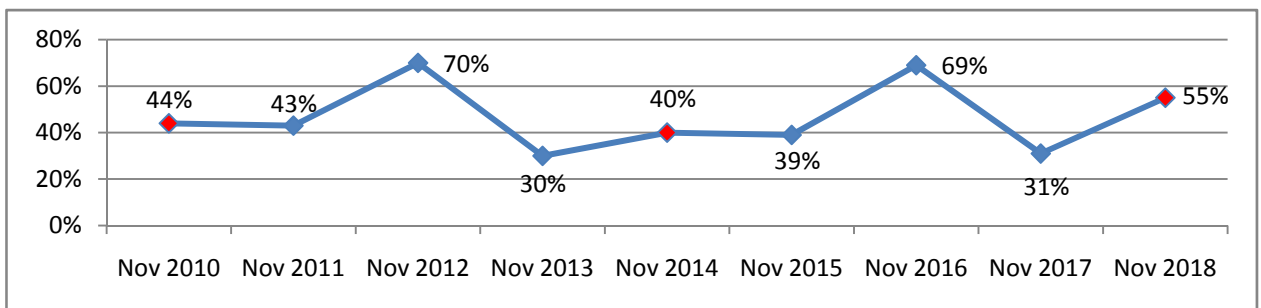
**Voter Registration History in Midterm Elections**



**Vote by Mail and Election Day Voting Comparison in General Elections**



**Voter Turnout Comparison in General Elections**



**Provisional Voting Comparison in General Elections**

