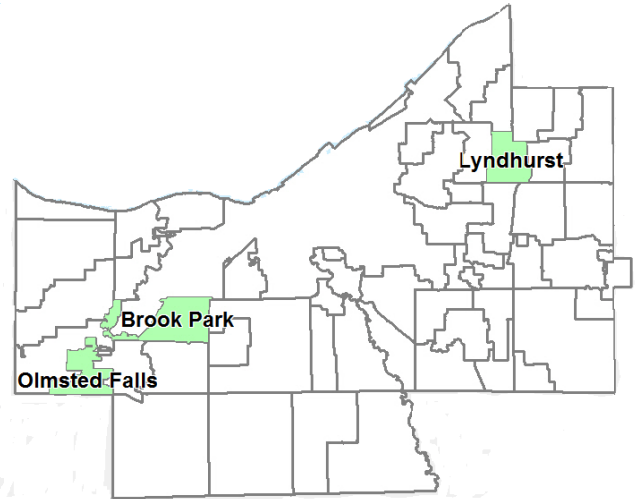


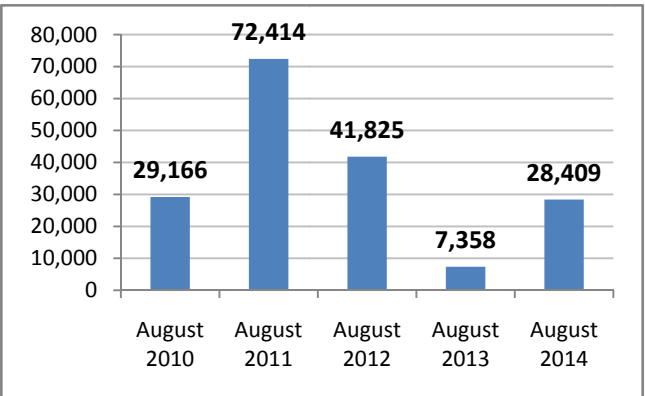
- 28,409 Registered voters
- 3 Municipality (Brook Park, Lyndhurst, Olmsted Falls)
- 33 Precincts
- 13 Voting locations
- 5 Issues

Brook Park: 2 municipal tax issues
Lyndhurst: 1 municipal tax issue
Olmsted Falls: 2 municipal tax issues

- 6,403 Ballots cast
- Turnout: 23%
- 4,548 (72%) Election Day
- 39 Provisional (0.61%)
- 4,587 Election Day and Provisional (72%)
- Vote by Mail: 1,816 (28%)



Registration Trends in August Elections 2011–2013



Vote by Mail:

Requests: 1,976

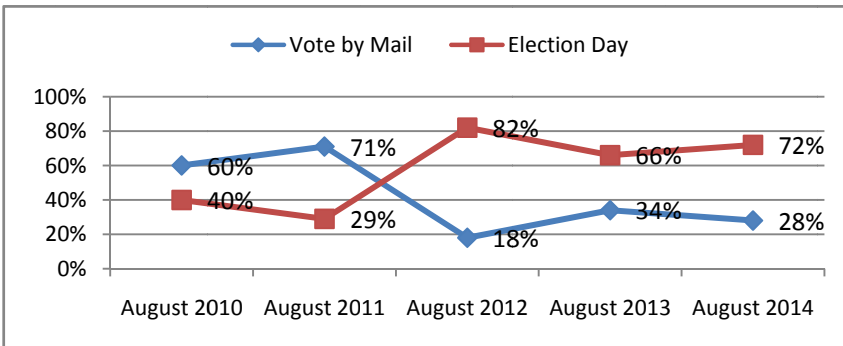
7% of voters requested ballots
 976 Brook Park
 603 Lyndhurst
 397 Olmsted Falls

Returns: 1,853

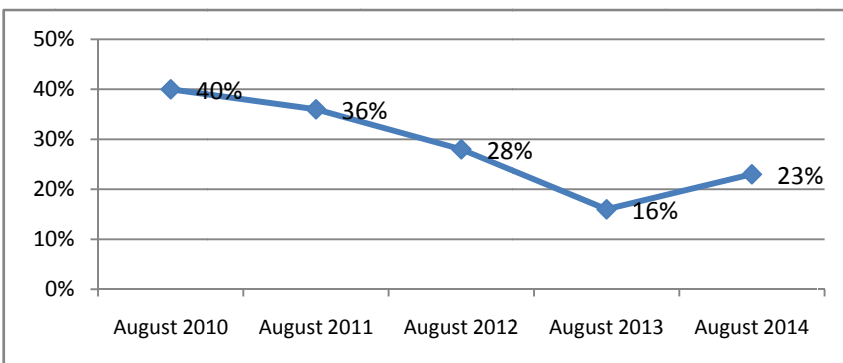
(includes 37 challenged ballots)
 92% of ballots were returned
 936 Brook Park
 545 Lyndhurst
 372 Olmsted Falls

23 Early Voters

Vote by Mail Trends in August Special Elections 2010 - 2014



Voter Turnout Trends in August Special Elections 2010 - 2014



August 2014 (3 municipalities)

28,409 Registered Voters **Ballots Cast**
23% Total turnout **6,403**
28% Vote by Mail 1,816
72% Election Day 4,587

August 2013 (1 municipality)

7,358 Registered Voters **Ballots Cast**
16% Total turnout 1,215
34% Vote by Mail 412
66% Election Day 803

August 2012 (4 municipalities)

41,825 Registered Voters **Ballots Cast**
28% Total turnout 11,920
18% Vote by Mail 2,119
82% Election Day 9,801

August 2011 (9 municipalities)

72,414 Registered Voters **Ballots Cast**
36% Total turnout 25,797
71% Vote by Mail 18,212
29% Election Day 7,585